



AZextra is an approved scale for use in retail settings, ideal for price-computing applications. AZextra shows weight, unit price and total price on front and back panels of the display simultaneously, allowing both the scale operator and customer to verify quantity and pricing. A pillar option moves the display from the back of the scale to the top, further ensuring unobstructed customer viewing. The internal memory on the AZextra scale stores up to 103 product look-ups to reduce operator error. Time, date, weight, unit price and total cost transmit easily to printers, allowing the user to keep records, track orders, and perform purchasing and inventory tasks. A choice of pricing by 100g\* and/or pricing with kilograms.

\*Feature not available in South Africa.

Front and rear displays provide simultaneous customer and operator viewing



Approved for trade



## Features

- Backlit LCD shows weight, unit price and total price, to provide all key information simultaneously
- Rear display on back of the scale lets customers see key data
- Adjustable leveling feet help optimize setup
- Color-coded keys facilitate quick recognition of the most frequently used buttons
- Large, grade 304 stainless steel pan allows swift cleaning
- Lightweight design simplifies transport and portability
- RS-232 interface is available to provide speedy connection to computers and printers
- Solid ABS housing is durable for industrial use
- Audible overload alarm warns when capacity is exceeded
- External calibration allows for verification and adjustment with weights
- Multilingual display permits use in various regions
- Preset tare function speeds the process of repetitive weighing
- Product look up (PLU) memory locations store a range of items for recall
- Selectable auto-clear function enables the last item to be reset each time the scale returns to zero
- Zero-tracking feature ensures display returns to zero reading
- EC type approved
- NRCS approved
- NMI approved
- Rechargeable battery included for operation almost anywhere
- Programmable auto power-off to save energy

## Applications

- Weighing
- Price computing

### About ADAM:

For more than 40 years, professionals worldwide have relied on Adam Equipment for an extensive selection of dependable and affordable weighing equipment. Adam provides the right balance of speed, performance and value.

| Model                           | AZextra 3  | AZextra 6 | AZextra 15 | AZextra 30 | AZextra 3P            | AZextra 6P | AZextra 15P | AZextra 30P |
|---------------------------------|--|-----------|------------|------------|-----------------------|------------|-------------|-------------|
| <b>Capacity</b>                 | 3kg  | 6kg       | 15kg       | 30kg       | 3kg                   | 6kg        | 15kg        | 30kg        |
| <b>Readability</b>              | 1g   | 2g        | 5g         | 10g        | 1g                    | 2g         | 5g          | 10g         |
| <b>Repeatability (S.D.)</b>     | 1g   | 2g        | 5g         | 10g        | 1g                    | 2g         | 5g          | 10g         |
| <b>Linearity (+/-)</b>          | 1g   | 2g        | 5g         | 10g        | 1g                    | 2g         | 5g          | 10g         |
| <b>Pan Size</b>                 | 225x275mm  |           |            |            |                       |            |             |             |
| <b>Weighing Units</b>           | kg   |           |            |            |                       |            |             |             |
| <b>Stabilisation Time (sec)</b> | 2  |           |            |            |                       |            |             |             |
| <b>PLU Memories</b>             | 103  |           |            |            |                       |            |             |             |
| <b>Interface</b>                | RS-232   |           |            |            |                       |            |             |             |
| <b>Calibration</b>              | External calibration   |           |            |            |                       |            |             |             |
| <b>Display</b>                  | Backlit LCD with 20mm -high digits   |           |            |            |                       |            |             |             |
| <b>Power Supply</b>             | Mains power cord / Internal rechargeable battery   |           |            |            |                       |            |             |             |
| <b>Operating Temperature</b>    | -10° to 40°C   |           |            |            |                       |            |             |             |
| <b>Housing</b>                  | ABS plastic  |           |            |            |                       |            |             |             |
| <b>Overall Dim.</b>             | 315x355x110mm (wxdxh)  |           |            |            | 315x355x535mm (wxdxh) |            |             |             |
| <b>Net Weight</b>               | 4.3kg  |           |            |            | 4.7kg                 |            |             |             |
| <b>Approvals</b>                | EC type approved(EU):T7068   NRCS approved(South Africa): SA1346   NMI trade approved(Australia): 6/4D/335 |           |            |            |                       |            |             |             |

## Accessories

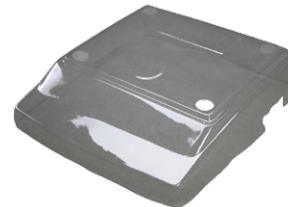
| Item number | Description   |
|-------------|---|
| 302000001   | Hard carrying case with lock                                  |
| 302205006   | In-use cover  |
| 700200057   | In-use cover (pack of 5)                                      |
| 700200058   | In-use cover (pack of 10)                                     |
| 1120011156  | ATP thermal printer   |
| 3126011263  | ATP thermal printer paper                                     |
| 3126011281  | ATP thermal printer paper (pack of 10)                        |
| 3074010266  | RS-232 cable (null-modem)                                     |
| 3074010507  | RS-232 to USB adapter (must order corresponding RS-232 cable) |
| 303149761   | Fish Scoop (complete with fitting to scale)                   |
| 303149759   | Vegetable Scoop (complete with fitting to scale)              |
| 303149760   | Confectionery Scoop (complete with fitting to scale)          |
| 600002028   | Adam DU data collection program                               |
| 700660290   | Calibration certificate                                       |

## Key Accessories



### Scoops

Metal scoops are designed to make portioning and food measurement easy. Three sizes available, small, medium and large.



### In-Use Cover

In-use covers provide an easy and affordable way to help keep the balance clean and protected.

Supplied by